

**Product  
Catalog**

**SOLAR ENERGY  
SYSTEMS  
CONSTRUCTION  
AND CONNECTION  
EQUIPMENTS**

[www.smcsolar.com.tr](http://www.smcsolar.com.tr)



Solar Manufacturing Center

TRAPEZ | SANDWICH | ROOF TILE | FLAT  
ROOF SYSTEMS



Solar Manufacturing Center

[www.smcsolar.com.tr](http://www.smcsolar.com.tr)



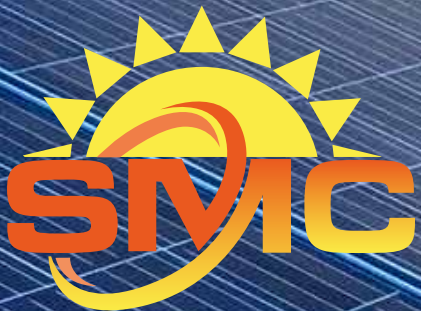
Solar Manufacturing Center

## QUALITATIVE, CUSTOMIZED AND RELIABLE SERVICE

SMC Aluminum Company was established in Bursa, one of the largest industrial cities of Turkey, to produce construction and connection equipment for solar energy systems.

The sun stands out as the most important, sustainable and clean energy source that can meet the increasing energy needs of the world. To meet the increasing demands in solar energy system production, SMC offers its experience and knowledge in the energy sector to its valued customers as a quality, customized and reliable service.

trapezoidal and sandwich panel roof systems



Solar Manufacturing Center

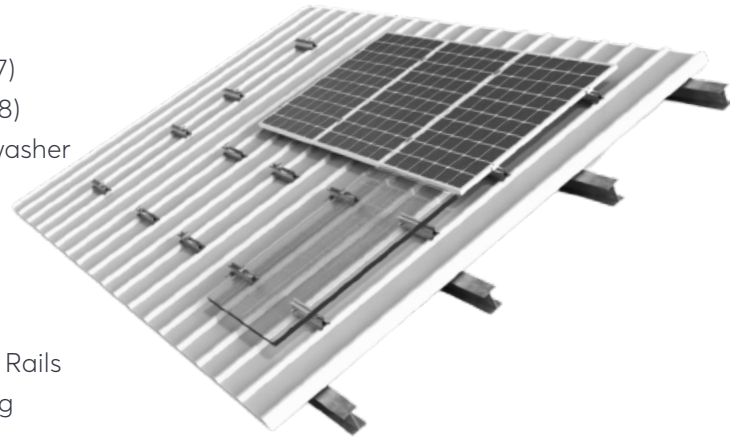
[www.smcsolar.com.tr](http://www.smcsolar.com.tr)

# TRAPEZOIDAL AND SANDWICH PANEL ROOF SYSTEMS

## STANDARD SYSTEMS

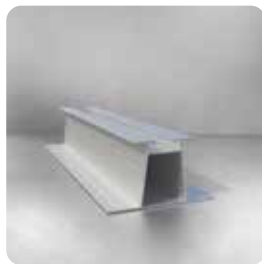
### MOUNTING PARTS

- Mounting Rails (SMC-1601, SMC-1602, SMC-1603, SMC-1604)
- Aluminum Nut (SMC-1605)
- Mid Clamp (SMC-1606)
- End Clamp H: 35 mm (SMC-1607)
- End Clamp H: 40 mm (SMC-1608)
- Self-drilling screw with sealing washer
- EPDM Tape
- DIN 912 A2 Imbus Bolt



### ASSEMBLY FEATURES

- Short and Full Length Mounting Rails
- Vertical and Horizontal Mounting



SMC-1601



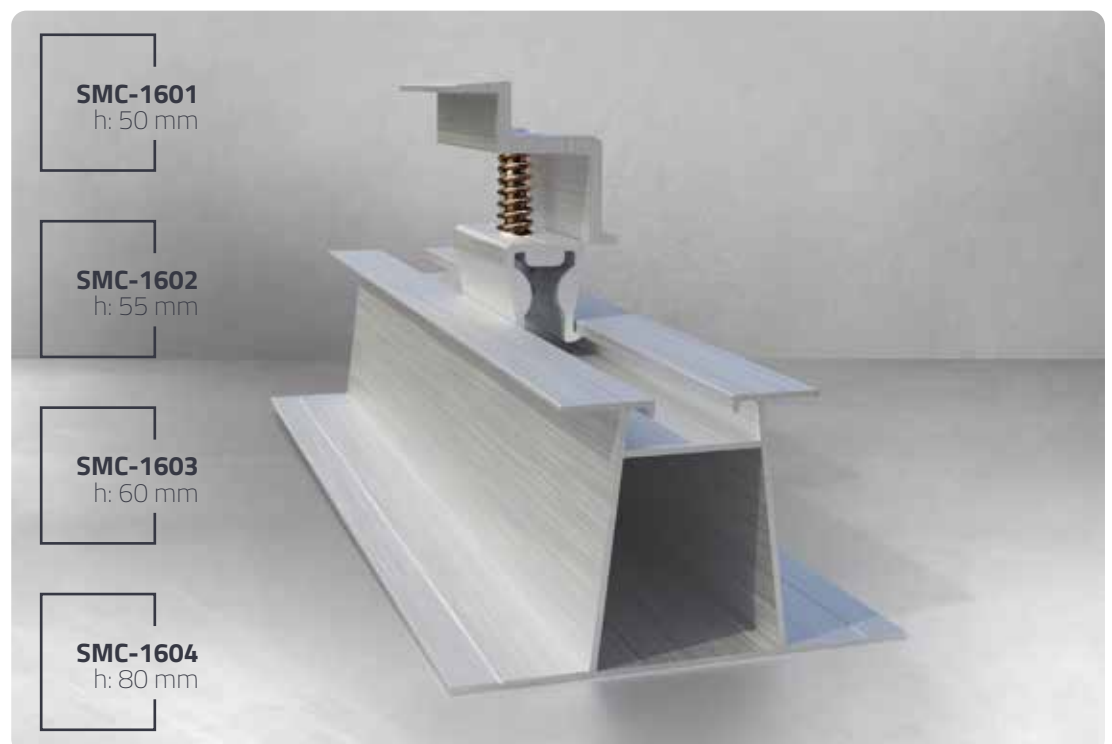
SMC-1605



SMC-1606



SMC-1607



**SMC-1601**  
h: 50 mm

**SMC-1602**  
h: 55 mm

**SMC-1603**  
h: 60 mm

**SMC-1604**  
h: 80 mm

trapezoidal and sandwich panel roof systems



Solar Manufacturing Center

[www.smcsolar.com.tr](http://www.smcsolar.com.tr)

# TRAPEZOIDAL AND SANDWICH PANEL ROOF SYSTEMS

## BEAM SYSTEMS

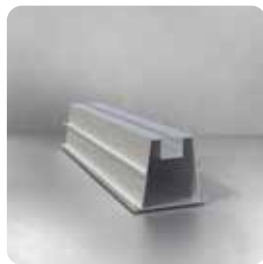
### MOUNTING PARTS

- h: 52,00 mm (SMC-1615)
- h: 21,80 mm (SMC-1616)
- Mid Clamp (SMC-1606)
- End Clamp H: 35 mm (SMC-1607)
- End Clamp H: 40 mm (SMC-1608)
- Mounting Clamp (SMC-1617)
- Self-drilling screw with sealing washer
- EPDM Tape
- DIN 912 A2 Imbus Bolt



### ASSEMBLY FEATURES

- Full Length Mounting Rails
- Vertical and Horizontal Mounting



SMC-1615



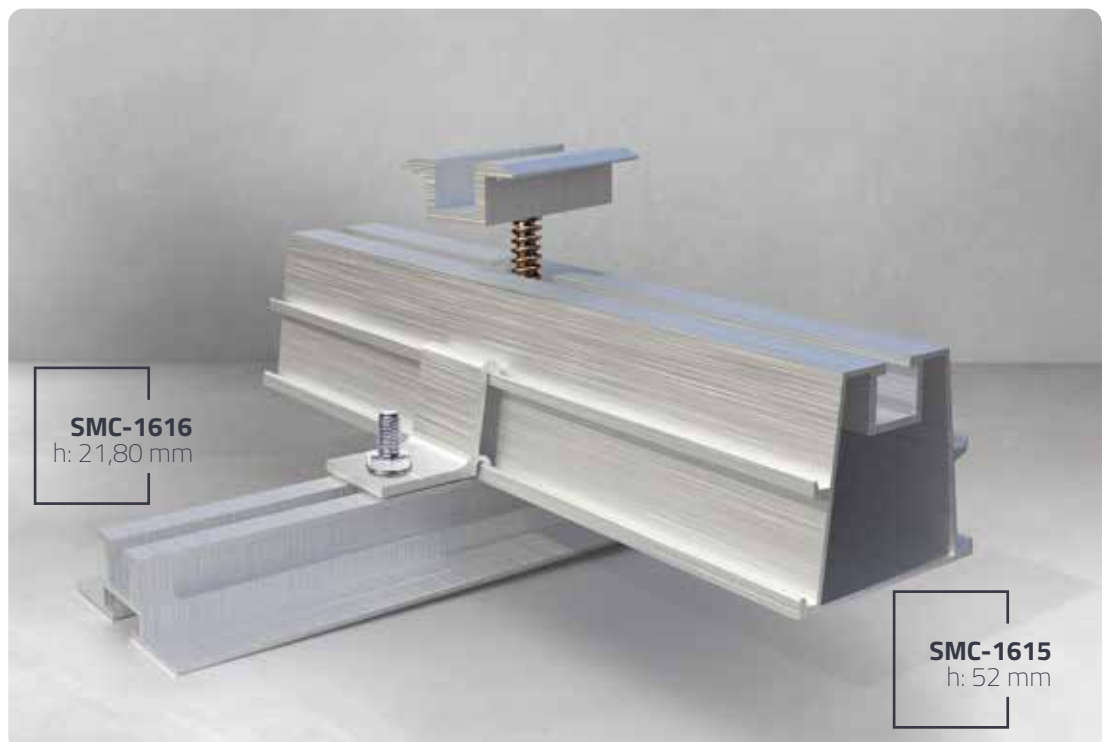
SMC-1616



SMC-1606



SMC-1617



SMC-1616  
h: 21,80 mm

SMC-1615  
h: 52 mm

trapezoidal and sandwich panel roof systems



Solar Manufacturing Center

[www.smcsolar.com.tr](http://www.smcsolar.com.tr)



# TRAPEZOIDAL AND SANDWICH PANEL ROOF SYSTEMS

## BRACKET SYSTEMS

### MOUNTING PARTS

- h: 40 mm Mounting Rail (SMC-1618)
- Mid Clamp (SMC-1606)
- End Clamp H: 35 mm (SMC-1607)
- End Clamp H: 40 mm (SMC-1608)
- Self-drilling screw with sealing washer
- Stainless or Steel Bracket
- EPDM Tape
- DIN 912 A2 Imbus Bolt



### ASSEMBLY FEATURES

- Short and Full-Length Mounting Rails
- Vertical Mounting



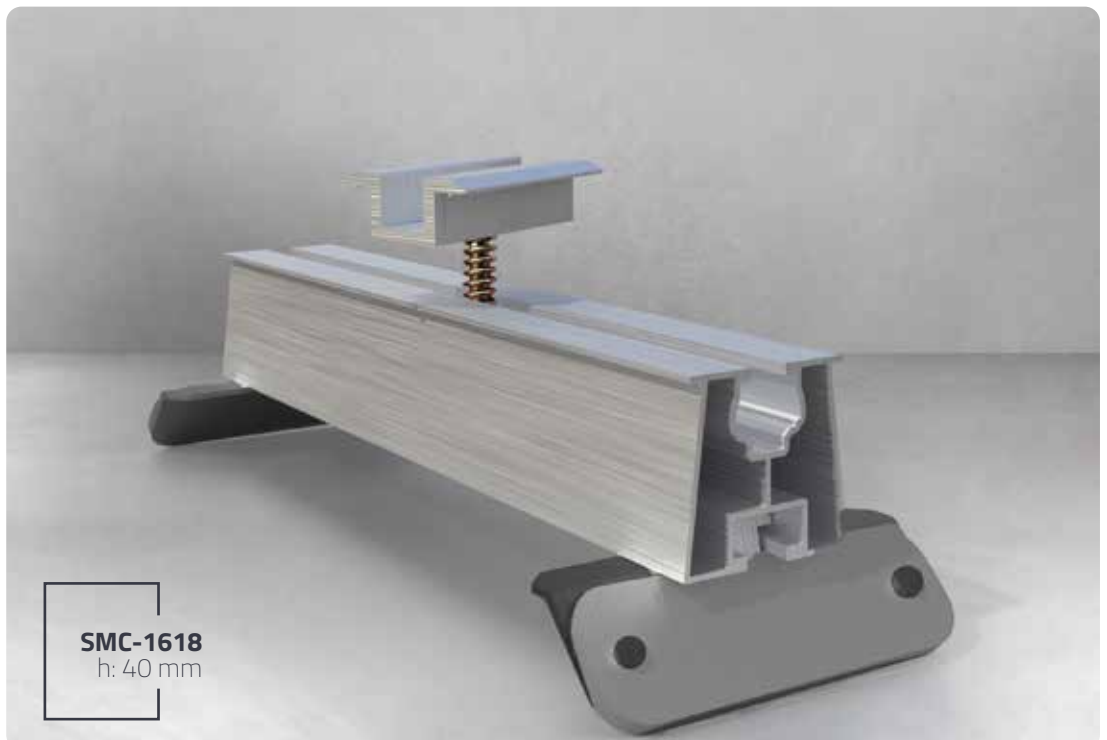
SMC-1618



SMC-1606



SMC-1607



**SMC-1618**  
h: 40 mm

roof tile systems



Solar Manufacturing Center

[www.smcsolar.com.tr](http://www.smcsolar.com.tr)

# ROOF TILE SYSTEMS

## MOUNTING PARTS

- h: 40 mm Mounting Rail (SMC-1618)
- Mid Clamp (SMC-1606)
- End Clamp H: 35 mm (SMC-1607)
- End Clamp H: 40 mm (SMC-1608)
- Tile roof hook
- DIN 912 A2 Imbus Bolt

## ASSEMBLY FEATURES

- Full Length Mounting Rails
- Under Tile Mounting



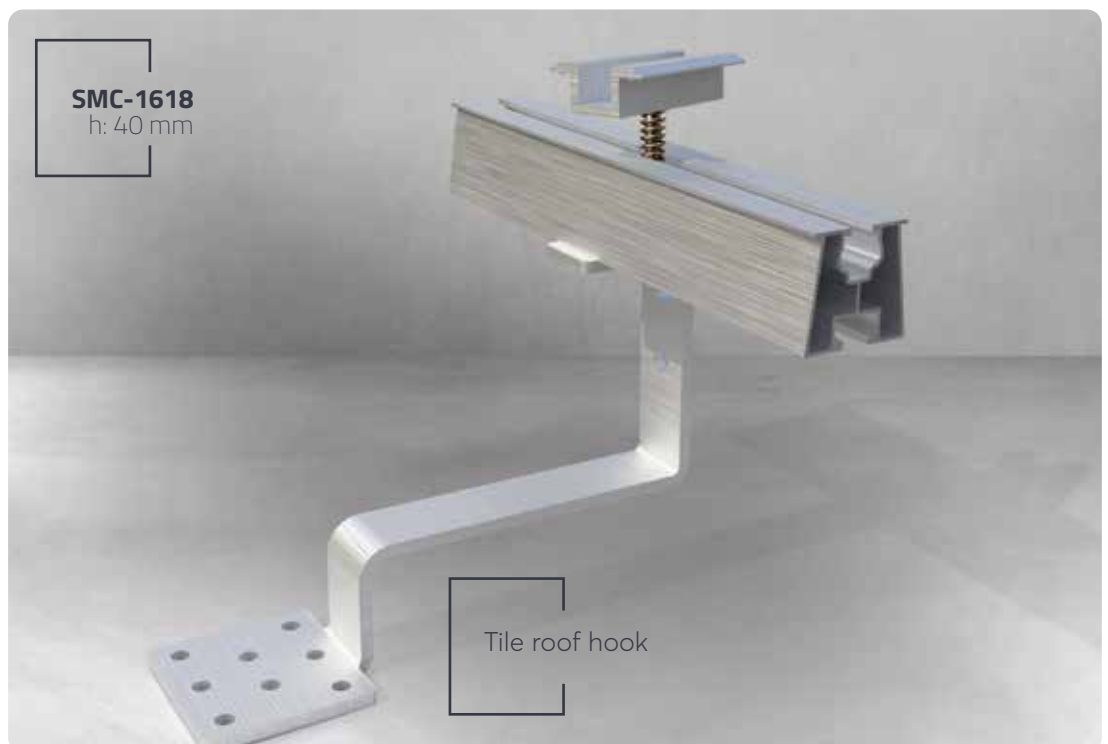
SMC-1618



SMC-1606



SMC-1607



SMC-1618  
h: 40 mm

Tile roof hook

## flat roof systems



Solar Manufacturing Center

[www.smcsolar.com.tr](http://www.smcsolar.com.tr)

# FLAT ROOF SYSTEMS

## MOUNTING PARTS

- Long Triangular Profile (SMC-1622, SMC-1623)
- Short Triangular Profile (SMC-1624)
- Base Profile (SMC-1621)
- Mid Clamp (SMC-1606)
- End Clamp H: 35 mm (SMC-1607)
- End Clamp H: 40 mm (SMC-1608)
- Steel or Concrete Anchor Screw
- DIN 912 A2 Imbus Bolts and Nuts

## ASSEMBLY FEATURES

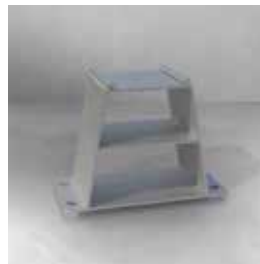
- Full Height Base Profile
- Concrete Anchoring
- 13° Angle



SMC-1621



SMC-1622



SMC-1623



SMC-1624



land systems

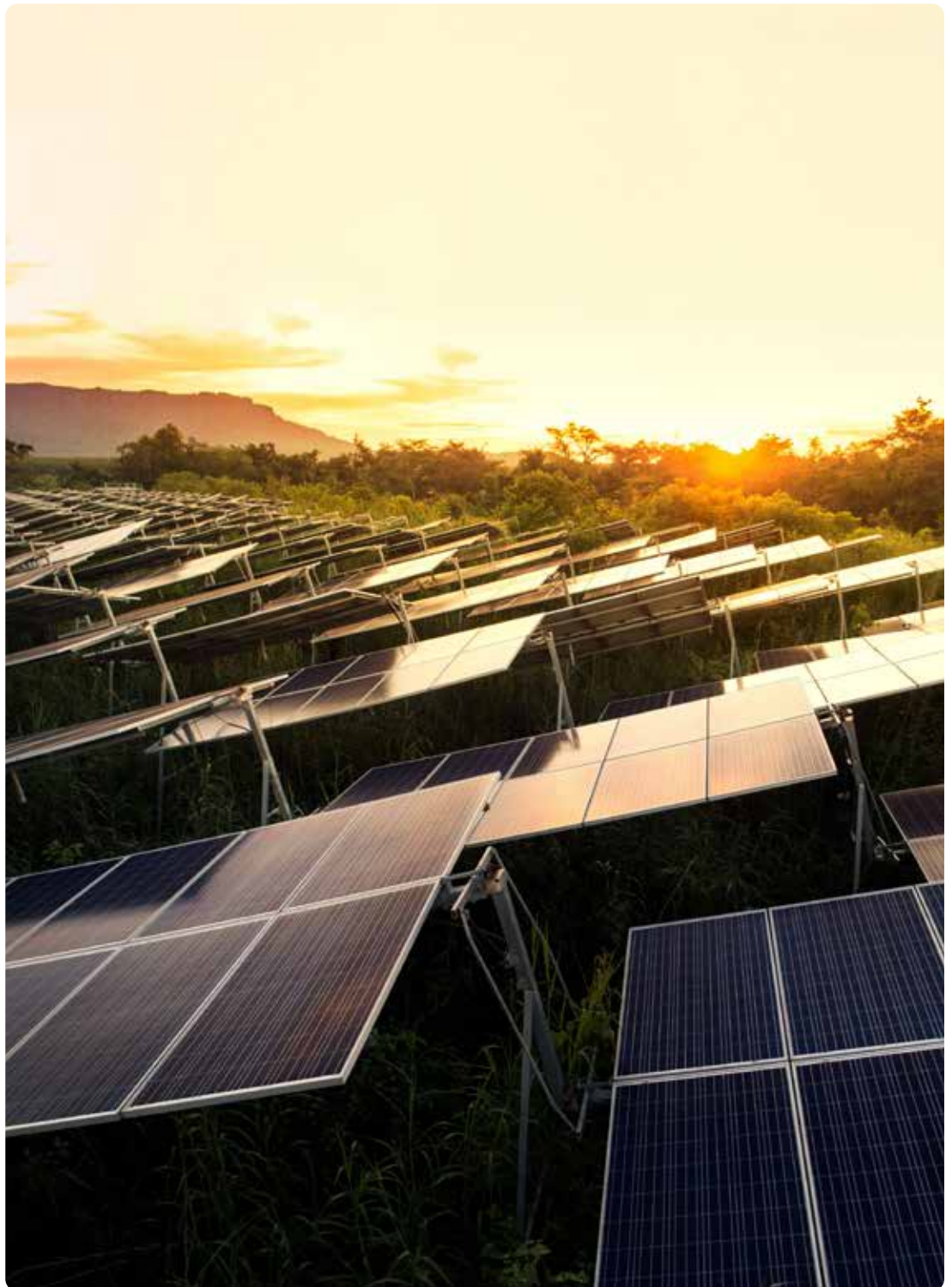


Solar Manufacturing Center

[www.smcsolar.com.tr](http://www.smcsolar.com.tr)

# LAND SYSTEMS

- Mounting Rails and Beam Profiles
- Construction and Connection Profiles
- DIN 912 A2 Bolts and Nuts
- Solutions According to Customer Demand and Terrain





Solar Manufacturing Center

Address: Çağrıřan Mahallesi Mudanya Yolu Cd.  
No: 58/1-3 Mudanya / BURSA

Phone: +90 224 244 80 81  
WhatsApp: +90 549 202 25 25

Mail: bilgi@smcsolar.com.tr  
web: www.smcsolar.com.tr